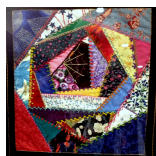


Board Meetings:

1st Wednesday of the Month
1:00 pm, Clubhouse 4 (knitting room)

General Meetings:

2nd Wednesday of the Month (Dark in July)
1:00 pm, Clubhouse 7
-- Check-in starts at 12:30 --



CRAZY QUILTERS GUILD

Susan Keller
5542 Avenida Sosiega W, Unit B
Laguna Woods, CA 92637

TO:

SEW ON & SEW FORTH

CRAZY QUILTERS GUILD - March, 2017



Susan Keller, Editor

PRESIDENT'S MESSAGE - By Vanda Bresnan

Once again, I must say we have many many talented ladies as demonstrated at our February meeting. The new members who showed up for "New Member Recognition" were awesome. As usual, Pat Clark and her able assistant, Candy McLaughlin, put on a good presentation for the new members.

After last week's storm and the promised one before the end of February, I am confident that we are looking forward to the end of winter. Don't forget that the second Sunday in March (the 12th) begins daylight savings--time so spring forward!

Have a great March and I look forward to seeing many of you on the 8th.

PS, we need volunteers for our birthday meeting in August. If you would like to volunteer, please do not hesitate to call me at [949-581-6287](tel:949-581-6287).

MEMBERSHIP - By Pat Clark - Vice President

Total members: 85

New members recognized: Ann Ainsworth, Audrey Bowman, Johana Christensen. Judith Karabelnik, Josie Johnson and Jane Warthen

March Birthdays

| | |
|-----------------|------|
| Guthrie, Lynda | 3/13 |
| Cesvet, Corrine | 3/20 |
| Welander, Kathy | 3/26 |

Happy Birthday!

Door Prize winner: Paula Minnihan



Facebook: 196 likes. February General Meeting pictures posted to:
https://www.facebook.com/pg/CrazyQuiltersLagunaWoods/likes/?ref=page_internal

BLOCK OF THE MONTH - By Nancy Allen

What a great February meeting. Welcome to each and every new member. Such talented ladies, one and all. To see some of the articles from our long-time members was a real treat.

Most of the kits for "Block of the Month" for March were picked up, which makes me very happy. How about that November block! It just kept multiplying: Two twins plus a 50"x60" throw.

Our "Blockhead" quilt (the block Deb Stewart brought us in January) was made entirely by those that frequent the quilt room on Thursdays and Tuesday evenings (and assembled mostly by Ann Ainsworth) is ready to be quilted. The B.O.M. from Jan.(Reverse Roles) will probably be quilted by the time you read this. Hopefully both quilts will be shown at the March meeting.

I found this article in the "American Patchwork and Quilting" April 17th issue. This is a quote.

Seam allowances matter. If you aren't sewing perfect 1/4" seams, your blocks won't be the same size. Being off just a little bit multiplies with every seam and will lead to big differences in finished sizes.

To determine your perfect 1/4" seam, cut three 1-1/2"-wide strips and sew them together. Press the seam allowances away from the center. Measure the width of the center strip. If it is one inch wide, you're spot on. If it's wider than an inch, your seams are too narrow. If it's narrower than one inch, your seams are too wide. When determining how much to adjust, remember that you lose a minimal amount in the turning of the seam.

EDITOR'S COMMENTS - By Susan Keller

Please submit inputs for the newsletter to me by the 20th of the month.

MONTHLY MINI- By Corrine Cesvet

Vanda Bresnan was the lucky winner of the Monthly Mini.



SHOW & TELL - By Mary McAdara

In February, some of our new members showed us their amazing quilts. They were Ann Ainsworth, Audrey Bowman, Johanna Christensen, Judith Karabelnick, Josie Johnson and Jane Warthen. There is some amazing new talent in our guild. In addition, about six of our regular members showed their quilting skills and Nancy Allen displayed two newly finished philanthropy quilts. A big thanks to everyone for your contributions to an enjoyable meeting.



Now is your time to shine! Please call me at [949-205-6561](tel:949-205-6561) to let me know if you would like to participate in March and how many quilts you would like to show. I will send you an information form for presenting your quilt.

TREASURER'S REPORT- By Candy McLaughlin

| CQ FINANCIAL REPORT | |
|---------------------|--------------------|
| January - 2017 | |
| Beginning Balance | \$11,286.32 |
| Income | \$2,638.30 |
| | \$13,924.62 |
| Expenses | \$1,218.74 |
| | <u>\$12,705.88</u> |
| Philanthropy | \$2,872.34 |
| General Checking | \$9,833.54 |
| | \$12,705.88 |

Upcoming Events

QUILT EXHIBIT SALES

Linda Easley, Chairperson [\(559\) 593-3850](tel:559-593-3850) lequilts67@att.net

Well Ladies, the Quilt Exhibit is rolling ahead. Here is more info about how everything is going to work--or at least how we hope it will work.

Members will be able to sell their handmade items at the Quilt Exhibit at Clubhouse 2 on September 2, 2017. You can purchase space on an eight foot rectangular table for \$25. The table can be shared by no more than two members. Non-members cannot display or sell anything. They can help with your table, but only to sell your items. I recommend that you have a friend help you so you can see the display and take breaks.

All proceeds from the sales will go to the member. The member will be responsible for their own set up, sales, money collection, bagging of sold items and take down at the end of the day.

The cost to see the exhibit is \$5. Members may have this \$5 waived by donating at least four (4) hours to setup, duties on the day of the event, or take down. Having a sales table DOESN'T count as donating time.

I was so pleased to see how many of you signed up to help. THANK YOU! There are still slots left. The sign up sheets will be at the next meeting. I'm also looking for lead workers for each of the committees. Let me know if you are willing to fill this role.

One of our biggest fund raisers is the Raffle Baskets. Get together with some of your friends to make up a basket. The themes are only limited by our imaginations. If you aren't participating in making a specific basket, you can participate by donating money so we can buy items to fill in where we are missing items. We will need about 8-10 baskets.. Don't forget to ask for gift certificates from the businesses you visit on a regular basis. These really generate interest in the baskets.

Since this is our first time to try this kind of exhibit, we need each and every one of us to be our own advertising. Start spreading the word now to generate excitement and planning. I will be working with Community Access to get the names of non-residents into the gate access system.

ADVERTISERS

Thank you to our advertisers. Please, give them your support.

949-716-6777 cosmicquilting@gmail.com



COSMIC QUILTING
Longarm Quilting Services
23011 Moulton Pkwy, A-15, Laguna Hills, CA 92653
cosmicquilting.com

949-716-6777 info@schoolhousesewing.com



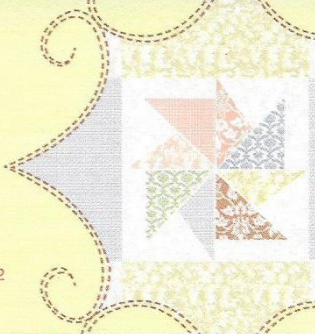
SCHOOLHOUSE SEWING
Classroom and Meeting Space
23011 Moulton Pkwy, A-15, Laguna Hills, CA 92653
schoolhousesewing.com

Pat's Quilting Service
Long Arm Quilting

Pat Lange
Quilter

Lake Forest, California

949-768-8034 / 949-456-7022
patlange2@sbcglobal.net



Our sincere thanks to our sponsor, Steve Supowitz, CEO Individual Food Service, in Bell, California for his generous contributions to Crazy Quilters from the **SUPO FOUNDATION.**